

ProMaster 5

Getting Started



WH Software
P.O. Box 300-655
Albany Mail Centre
New Zealand
<http://www.whsoftware.com>

WH Software may have patents and/or pending patent applications covering subject matter in this document. The furnishing of this document does not convey any license to these patents.

Copyright 1996-2003 WH Software. All rights reserved. All WH Software product names are trademarks or registered trademarks of WH Software. Other brand and product names are trademarks or registered trademarks of their respective holders.

License And Copyright

License

W.H. Software provides this software and accompanying manual (“publication”), as is, without warranties, express, implied or statutory. This is in respect to its contents and includes, without limitations, any implied warranties of application for a particular purpose, all of which are expressly disclaimed. Neither W.H. Software, nor any of its agents, consultants, distributors or dealers shall in any event be liable for any indirect, incidental or consequential damages arising from the use of this publication. W.H. Software may make improvements and/or changes in the product or program, as described in this manual, at any time and without notice.

Although W.H. Software has used its best efforts to eliminate inaccuracies from this manual, this publication could contain technical inaccuracies and typographical errors. Changes made from time to time to the information contained in this manual will be incorporated in later editions of this publication.

Lock manufacturers do not authorize the information contained in ProMaster. Manufacturer names are used for identification purposes only.

Full License Agreement: The ProMaster installation program includes the full license agreement, which you must read and agree to in order to continue the installation. After installation, the license agreement may be read by selecting **About** from the **Help** menu then clicking on the **License** button on the About Window.

Copyright

Copyright © 1996 – 2003 W.H. Software. All rights reserved. Licensed material - program property of W.H. Software. Law strictly prohibits unauthorized use, duplication or distribution.

About this document

This document introduces ProMaster 5 and describes the installation procedure for ProMaster 5. Information can be found within this document on how to access the complete ProMaster 5 documentation. An overview of new features in ProMaster 5 is provided for those upgrading from ProMaster 4.

The assumption is made that (a) the installer is confident using Microsoft Windows, (b) for network installations the computers involved have the TCP/IP networking protocol installed and functioning correctly and (c) for installations on Windows NT, Windows 2000 and Windows XP the installer has administrator access.

Contacting WH Software

✎ Mailing address

WH Software

P.O. Box 300-655
Albany Mail Centre
New Zealand

Phone: +64 9 413-7595

Fax: +64 9 413-7596

USA Free phone: 1 888 648 7111

UK Free phone: 0 800 917 2694

✎ World-wide web site

WH Software maintains an Internet site on the worldwide web.

The URL of this site is:

<http://www.whsoftware.com>

This site has product information and product updates for download.

As with any Internet site, it changes continuously, so visit it often.

✎ Email addresses

For sales and pre-sales related questions send email to sales@whsoftware.com

For technical questions send email to promaster@whsoftware.com

Introduction

Welcome to ProMaster 5

ProMaster is a master keying program for the professional locksmith who has a good basic understanding of master key systems and their design. It is an extremely useful locksmith tool, developed with the latest computer software in response to current marketplace requirements. With the comprehensive step-by-step online instruction manual, you will find creating your own master key systems a quick and simple task.

We are confident you will find it an easy and enjoyable program to use. Any suggestions/comments for improvements in future versions are welcome, and may be addressed via email to:

promaster@whsoftware.com

Contents

License And Copyright	3
License	3
Copyright	3
About this document	3
Contacting WH Software	4
Introduction.....	5
Welcome to ProMaster 5.....	5
Contents.....	6
Section 1 Welcome.....	9
ProMaster 5 At A Glance.....	10
Easiest ProMaster Yet.....	10
Built on the Strengths of ProMaster 4	10
Where To Find Information.....	11
ProMaster 5 Documentation.....	11
ProMaster Update Web Site.....	11
If You're New To ProMaster	11
If You've Used ProMaster Before.....	11
Section 2 Setup	13
Before You Begin	14
Network Installation vs. Stand Alone Installation.....	14
Meeting Hardware Requirements.....	15
Networking Protocol Requirements.....	16
Stopping The InterBase Server	16
Personal Firewall Software.....	16
Running Setup.....	17
To Begin Installing ProMaster 5	17
Step-By-Step Installation Instructions	17
Upgrading Your ProMaster 4 Database	22
Using ProMaster 5 For The First Time	24

Section 3 What's New	25
New Features In ProMaster 5 For ProMaster 4 Users	26
New Ways To Build Systems	26
Changes To The User Interface.....	27
Backing Up Your Data.....	28
Simpler Integrated Upgrade	29
Changes To Finding Data	29
Data Entry Changes	30
Changes To Jobs	31
Changes When Importing And Exporting Data	33
New Information Stored	34
Security Changes.....	34
Administrative Changes	34
Coding Changes	35
Reporting Changes	39

Section 1

Welcome

Contents

- ProMaster 5 At A Glance
 - Easiest ProMaster Yet
 - Built on the Strengths of ProMaster 4
- Where To Find Information
 - ProMaster 5 Documentation
 - ProMaster Update Web Site
 - If You're New To ProMaster
 - If You've Used ProMaster Before

ProMaster 5 At A Glance

Easiest ProMaster Yet

ProMaster 5 brings to you a new appearance with the system displayed on each window as you work, and easier access to common functionality with bigger clearer buttons and reorganized menus.

New ways to create systems reduce the burden of data entry. For example, ProMaster 5 can read an Excel spreadsheet (sample provided) and create the whole system in a few minutes. If your customer knows what they want, simply give them a copy of the ProMaster Spreadsheet and have them complete the doors, keys and keying etc and most of the data entry is done for you!

How about those systems where you have a huge hierarchy of many doors and keys? A new wizard allows you to easily define the hierarchy and when you're done ProMaster 5 makes all the doors and keys for you.

Mobile locksmiths will love the ability to email key and door information to their Personal Digital Assistant (PDA for short, often referred to as a Pocket PC), while corporate locksmiths can turn this feature off to keep the tightest possible security.

And talking of security, restricting systems so only selected users can open them is another way to keep control of those highly sensitive systems.

ProMaster 5 gives you the best coding experience and latest coding features. For example, the Design Assistant automatically generates Rotated Constants to maximize the number of codes available. The Key Color assistant lets you determine how colors will be assigned to keys so they will be assigned colors while they are coded, saving you the time of manually assigning colors.

Built on the Strengths of ProMaster 4

ProMaster 5 significantly expands the existing capabilities of ProMaster 4, providing a more flexible and configurable master-keying experience.

The huge capacity of ProMaster 4, its multi-user capabilities and Extreme Performance Pinning and Phantom Engine are core technologies in ProMaster 5.

The crisp clean layout of ProMaster 5 reports will be familiar to ProMaster 4 users, and a selection of new reports adds some great new functionality to the report suite. For example, the Signatory Key Authority Report produces a matrix of signatories and keys showing who can order each key in a system with restricted ordering.

For those who email reports to their customers, ProMaster 5 adds the ability to email the Keying Matrix Report.

Where To Find Information

ProMaster 5 Documentation

ProMaster 5 includes a comprehensive manual in electronic format. The manual is installed on your computer at the same time as ProMaster 5.

To access the manual, start ProMaster 5 and choose **ProMaster 5 Manual** from the **Help** menu

The manual is provided in Adobe Acrobat format. The installation of ProMaster 5 offers you the option to install Acrobat Reader. Alternatively, you can obtain Acrobat Reader free of charge from <http://www.adobe.com>

We recommend you take the time to read the manual, as this will save you a bunch of time in learning all the features in ProMaster 5.

ProMaster Update Web Site

Periodically ProMaster 5 updates are made available. These updates add new functionality and rectify anomalies. Please check the ProMaster Internet site <http://www.whsoftware.com> regularly.

If You're New To ProMaster

If you're not familiar with ProMaster, it's easy to get started. After you install ProMaster, access the manual (as explained above) and read as you try.

If You've Used ProMaster Before

If you're already working with ProMaster, the transition to ProMaster 5 is smooth. If you upgrade from ProMaster 4, you're data, settings and preferences are all preserved.

You'll notice significant changes if you are upgrading from ProMaster 3 or ProMaster 2.

ProMaster 3 and ProMaster 2: ProMaster 5 includes the functionality to upgrade from ProMaster 4. Due to the overwhelming proportion of users who have previously moved to ProMaster 4, we elected to simplify ProMaster 5 by omitting the functionality required to upgrade from ProMaster 2 or ProMaster 3. **If you are a ProMaster 3 or ProMaster 2 user, contact us (see: Contacting WH Software) and we will be happy to assist with upgrading your data.**

Section 2 Setup

Contents

Before You Begin

- Network Installation vs. Stand Alone Installation
- Meeting Hardware Requirements
- Networking Protocol Requirements
- Stopping The InterBase Server
- Personal Firewall Software

Running Setup

- To Begin Installing ProMaster 5
- Step-By-Step Installation Instructions
- Upgrading Your ProMaster 4 Database
- Using ProMaster 5 For The First Time

Before You Begin

Before you install ProMaster 5:

- Make sure your computer hardware meets the minimum requirements.
- Make sure you have your ProMaster 5 registration information.
- If you are upgrading from ProMaster 4 make a backup of your ProMaster 4 database (typically ProMaster4.gdb)
- If you are upgrading from ProMaster 3 or ProMaster 2, contact WH Software and organize your database upgrade prior to installing ProMaster 5

Network Installation vs. Stand Alone Installation

ProMaster 5 may be installed on a single computer “Stand Alone” or on multiple computers connected by a network “Network Installation”.

Stand Alone Installation

In a Stand Alone installation, all parts of the ProMaster 5 system are installed on a single computer.

Network Installation

In a Network Installation, one computer is designated as the Server and on this computer all parts of the ProMaster 5 system are installed.

All other computers are designated as Workstations and on these computers only a subset of the ProMaster 5 system is installed.

A single copy of the database is stored on the Server, and the Workstations access the data from the Server.

The Server must always be available so that the Workstations are able to access your ProMaster data. The Server must be protected from unplanned restarts and power outages.

In a Network Installation, you should install ProMaster on the Server before you install ProMaster on the Workstations.

Licensed User Count: ProMaster 5 maintains a record of the number of users connected. ProMaster 5 is licensed on a per-user basis. If you are unable to log into ProMaster because you are attempting to use more connections than you have licenses, please contact your reseller to purchase additional licenses.

Meeting Hardware Requirements

Before you install ProMaster 5, make sure your computers meet the following minimum hardware requirements.

All Computers

- 200 MHz Pentium II or higher microprocessor (or equivalent).
- 800 x 600 or higher display resolution, running small fonts.
- The most recent Service Pack for your operating System.
- Keyboard, Mouse or other pointing device, CD-ROM or DVD drive.

Stand Alone Installation – Windows 95 or 98

- 64 megabytes (MB) of RAM recommended minimum.
- 100 MB of free disk space.

Stand Alone Installation – Windows ME, NT4, 2000 or XP

- 128 megabytes (MB) of RAM recommended minimum.
- 100 MB of free disk space.

Network Installation – Server

- 128 megabytes (MB) of RAM recommended minimum.
- 100 MB of free disk space.

Network Installation – Workstations – Windows 95 or 98

- 64 megabytes (MB) of RAM recommended minimum.
- 30 MB of free disk space.

Network Installation – Workstations – Windows ME, NT4, 2000 or XP

- 64 megabytes (MB) of RAM recommended minimum.
- 30 MB of free disk space.

Recommendations

- For System Coding, a large monitor (17" to 21") and higher resolution (1024 x 768 or better).
- The memory requirements above are a minimum. Coding large systems will require more memory. Running other programs at the same time will require more memory.
- If you experience power spikes, outages, brownouts or other service interruptions you should install an appropriate power filter or UPS (uninterrupted power supply).
- **We strongly recommend that the computer for a Stand Alone Installation and that for the Server in a Network Installation run Windows 2000 or Windows XP Professional.**

Networking Protocol Requirements

ProMaster requires that the TCP/IP networking protocol be installed and functioning correctly. Normally this is done as part of installing Windows. If you do not have TCP/IP installed and correctly configured then you should install it before proceeding with the ProMaster installation. See your Windows documentation or systems support person for help installing TCP/IP.

Stopping The InterBase Server

The InterBase server is installed on the computer that hosts the database.

If ProMaster is already installed on the computer, you must stop the InterBase server before ProMaster 5 setup can continue.

Typically this will affect ProMaster 3 and 4 users who are installing ProMaster 5, but also if you reinstall ProMaster 5 then you must stop InterBase.

Warning: When you stop InterBase you will disconnect any users who are operating ProMaster. Ensure that ProMaster is closed (on all workstations if operating in a Network installation) before stopping the InterBase Server.

Stopping InterBase on Windows 95 / 98 / ME

If the InterBase server is running, you will see a small green icon in your task tray (near the clock). Right click on this icon and stop InterBase.

Here's the icon you're looking for on Windows 95, 98 or ME:



Stopping InterBase on Windows NT4 / 2000 / XP

Open your **Control Panel** then the **Services** applet. Locate the service called "InterBase Server" and stop it.

Personal Firewall Software

Personal firewall software is increasingly popular to help protect from malicious computer attacks. If you are running any type of firewall software you must ensure that it allows ProMaster to communicate on TCP port 3050.

If ProMaster is unable to communicate with its database, try disabling your firewall software to identify the source of the problem.

Running Setup

The Setup Wizard gathers information, including existing installation locations, installation type and destination locations. Setup then copies the appropriate files to your hard disk and configures your installation.

To Begin Installing ProMaster 5

1. Start your computer and log in if necessary.
2. Insert your ProMaster 5 CD into your CD-ROM drive.
3. If Windows automatically detects the CD then ProMaster 5 Setup will appear. Otherwise, click **Start**, and then **Run**. At the prompt, type the following command, replacing *d* with the letter assigned to your CD-ROM drive:

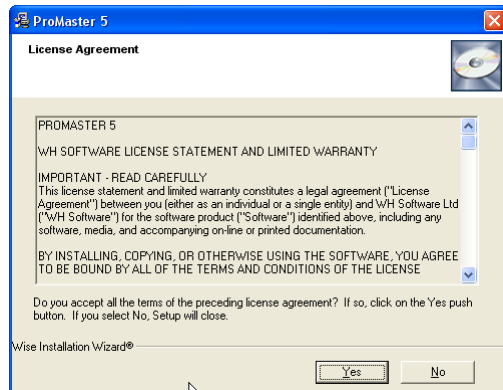
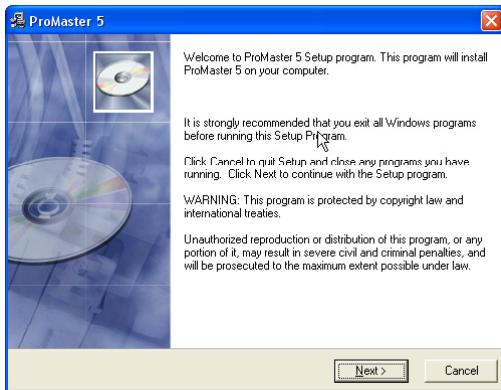
```
d:\PM5Setup.exe  
Press ENTER.
```

4. Follow the instructions that appear.

Step-By-Step Installation Instructions

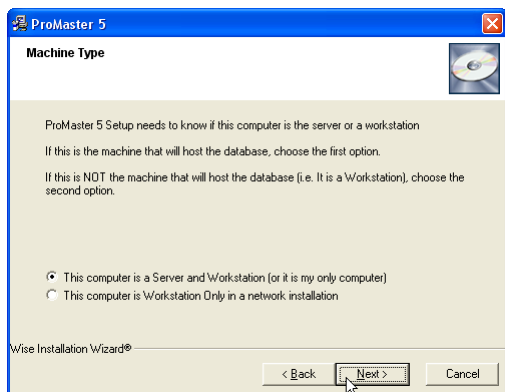
Before you are asked any questions, you will see the introduction and be asked to accept the license agreement.

When: Always



To continue you must accept the license agreement.

When: Always



The first question you will be asked is if this computer is a server or a workstation.

If you are performing a Stand Alone installation, take the first choice.

If you are performing a Network Installation and this computer is the Server, take the first choice.

If you are performing a Network Installation and this computer is a Workstation, take the second choice.

From here on, the questions you are asked depend on your choices and information found on your computer.

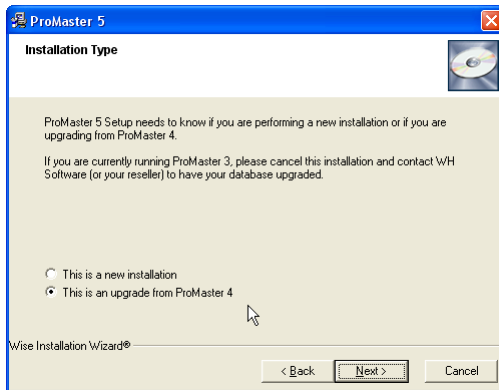
If **all** the following conditions are met, then you will be given the choice to do a new installation or an upgrade.

- ProMaster 5 is not already installed.
- ProMaster 4 is installed.
- ProMaster 4's configuration file was located by Setup.

Note: If ProMaster 5 Setup does not give you the choice to upgrade your ProMaster 4, don't panic. The tasks performed by the upgrade can be performed later, and we recommend you call your reseller or WH Software for assistance.

If all the conditions are not met, then a new install will be performed.

When: ProMaster 5 is not already installed and ProMaster 4 is installed

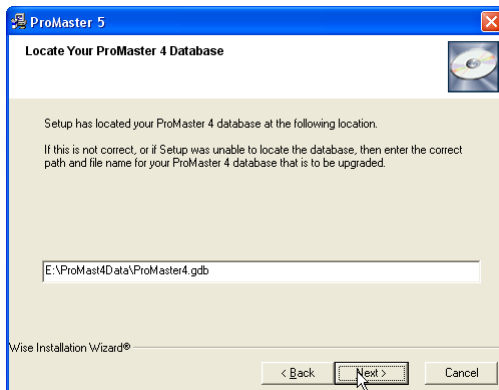


Choose to upgrade your ProMaster 4 unless you have a good reason not to.

The ProMaster 4 upgrade is non-destructive. I.e. It makes a copy of your ProMaster 4 database and settings and leaves the original files intact. Your ProMaster 4 database is renamed so that it cannot be updated by mistake in the future.

If you are upgrading from ProMaster 3 or ProMaster 2 you will not get this choice. Contact WH Software and organize your database upgrade prior to installing ProMaster 5.

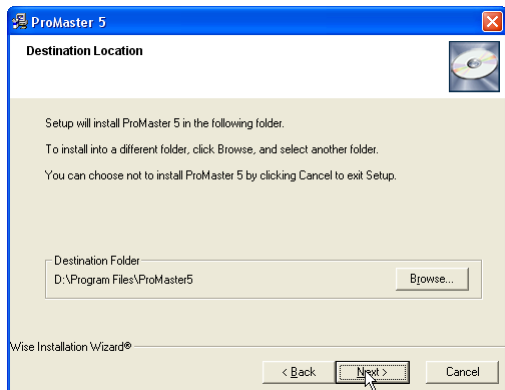
When: Server or Stand Alone Installation and upgrading from ProMaster 4



As part of the server upgrade from ProMaster 4, ProMaster 5 Setup needs to copy your ProMaster 4 database.

If ProMaster 5 Setup has not correctly located your ProMaster 4 database, enter the correct details yourself.

When: Always

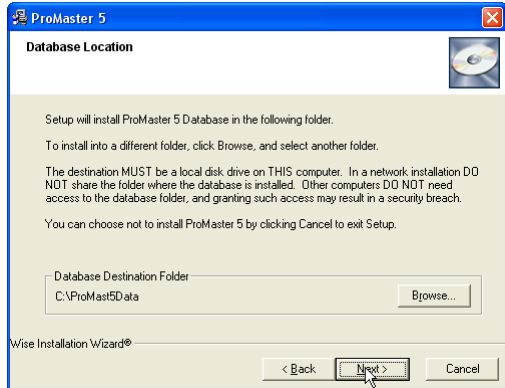


Regardless of the type of installation you are performing, ProMaster 5 Setup will ask you to confirm the location where the ProMaster 5 program files will be installed.

The standard location for your Windows configuration is offered as the default.

You should not need to change the Destination Folder.

When: Server or Stand Alone Installation but not a Workstation Installation



ProMaster 5 Setup offers you the default location to install the database.

On a simple installation this is a fine choice, however on a large server, you may have a more suitable drive on which you want to install your database.

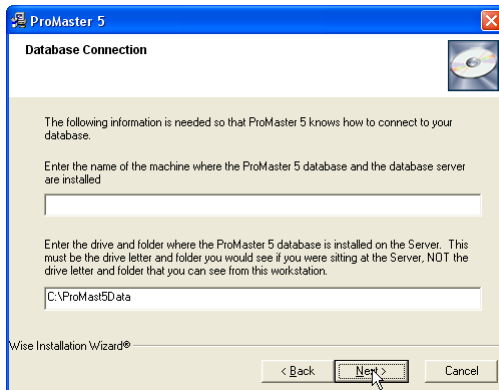
If you are upgrading from ProMaster 4, a copy (renamed as ProMaster5.gd) of your ProMaster 4 database will be made in this location.

If you are doing a new installation, a blank ProMaster 5 database (called ProMaster5.gd) will be created in this location.

Regardless of the choices you make, a database will never be overwritten.

Of course you will not be offered this choice for a Workstation Installation because the database is not installed on a workstation.

When: Workstation Installation In A Network Environment but not a Server Installation



If, and only if, you are performing a Workstation Installation, you will be asked how to locate the database on the Server.

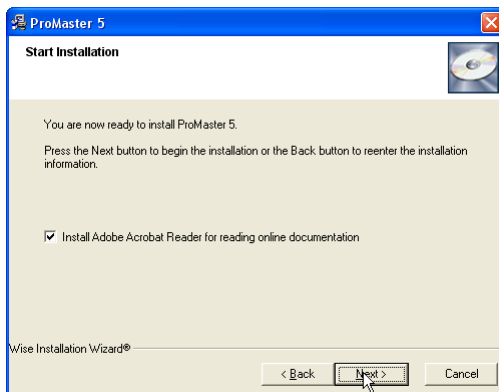
Remember: Do **not** use Windows to share the database or database location on the Server.

Do not think about how you might see the database file when you are sitting at this Workstation. Think only of how you see the database when you are sitting at the Server.

If you enter a mapped drive letter, or “\\” indicating a Windows network location, then you are doing it **wrong**.

Think of it this way: ProMaster talks to the Server computer, not directly to the database file.

When: Always



The final step before beginning the installation is to confirm that you want Adobe Acrobat Reader installed so that you may read the online manual.

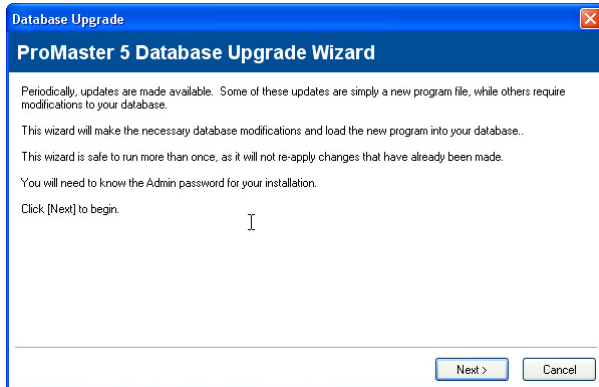
During the installation process, ProMaster 5 Setup will spawn the Acrobat Reader Setup. Please follow the on-screen instructions for Acrobat Reader Setup.

Upgrading Your ProMaster 4 Database

This section is applicable only if you have chosen to do a ProMaster 4 upgrade and only on the Server (or in the case of a Stand Alone Installation the only computer on which you installed ProMaster 5)

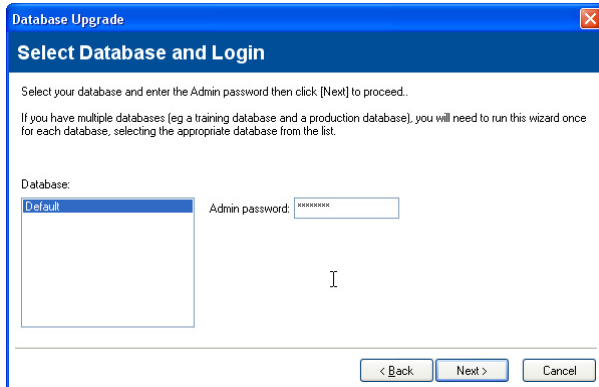
Once the installation process is finished, ProMaster 5 Setup will spawn ProMaster 5 in order to perform the database upgrade.

Here's what it will look like:



The Database Upgrade Wizard can take any ProMaster 4 or ProMaster 5 database and upgrade it to the current version that you have installed on your computer.

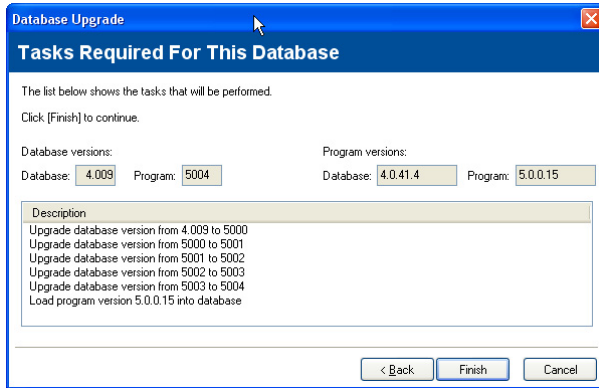
Information: At a later date, a ProMaster 5 update may be made available. After downloading the update and installing it you are presented this same Database Upgrade Wizard to step through.



Only people who know the Admin password for your database may perform the upgrade.

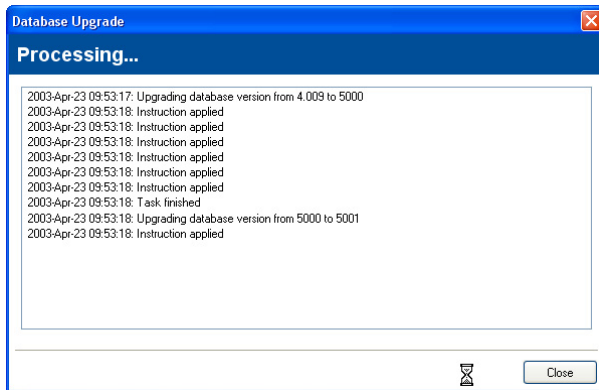
Having entered the Admin password, ProMaster then checks for other users.

If any other users in a Network Installation (or another copy of ProMaster running on your computer) are logged in then you must log them out before ProMaster will allow the Database Upgrade to continue.



ProMaster examines your database and compares it to the current version of the ProMaster program that is installed.

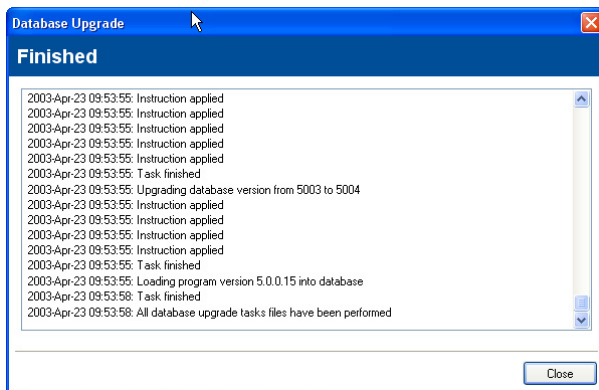
If there are tasks that need to be performed it will list them, otherwise the wizard will finish, as no upgrade is necessary.



The upgrade process may take anywhere from a few seconds to several minutes, depending on the speed of your computer and the type of tasks that need to be performed.

Do not interrupt the upgrade process as you may leave your database in an unusable state.

Do not allow users to log into ProMaster during the upgrade as this may interrupt the upgrade and may leave your database in an unusable state.



When the upgrade is finished, close the Wizard.

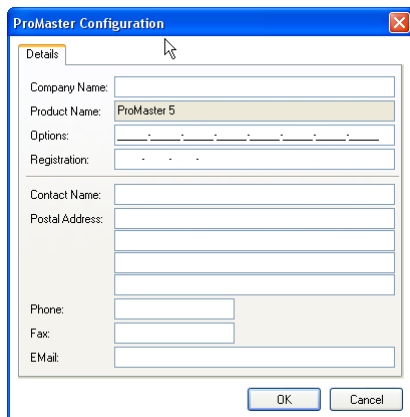
Using ProMaster 5 For The First Time

If You're New To ProMaster

When you first log into ProMaster 5, you must connect as the user called “admin”.

The initial password for “admin” is “password”.

Logging In For The First Time



The first time you log into ProMaster 5 the ProMaster 5 Configuration will appear.

To continue you must enter your Company Name, Options and Registration **exactly** as they appear on the registration sheet supplied by your reseller.

Changing Your Initial Password

When you first use ProMaster 5, and whenever the Admin user creates a new user, the initial password for each user is “password”.

ProMaster 5 does not allow “password” to be used beyond the first login for each user. After you log in you are required to change your password.

Section 3

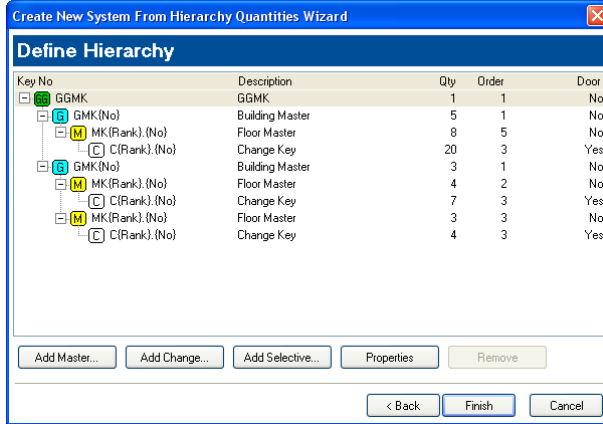
What's New

Contents

New Features In ProMaster 5 For ProMaster 4 Users

- New Ways To Build Systems
- Changes To The User Interface
- Backing Up Your Data
- Simpler Integrated Upgrade
- Changes To Finding Data
- Data Entry Changes
- Changes To Jobs
- Changes When Importing And Exporting Data
- New Information Stored
- Security Changes
- Administrative Changes
- Coding Changes
- Reporting Changes

Rapid System Creation From Key Hierarchy



The new system hierarchy wizard steps you through entering client and system details, then you specify the hierarchy of your system, how you want keys numbered, how you want doors numbered, how many of each you want to create and how many of each you want to order.

When you're done, choose Finish and in a short span of time the whole system is created.

In the system shown here, 990 keys and 920 doors will be created.

Changes To The User Interface

Windows XP Themes Supported

Windows XP users will love the integration of Windows XP themes in to ProMaster 5.

More System Details Shown

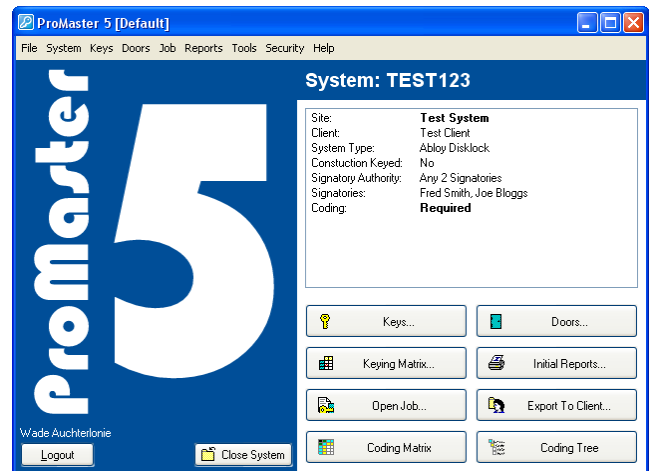
The main window gives you a whole lot more of an overview of the current system. The details you see here are customizable.

Larger Buttons

Gone are the small buttons. ProMaster 5 has larger, easier to read, easier to find buttons for the most common tasks.

Reorganized Menus

ProMaster 5's menu has been reorganized to give you easier access to common tasks and to move the less common tasks out of the way.



System Details On Each Window

Each window now shows you the System Number and Site Description so there's no confusion about which system you are working on.

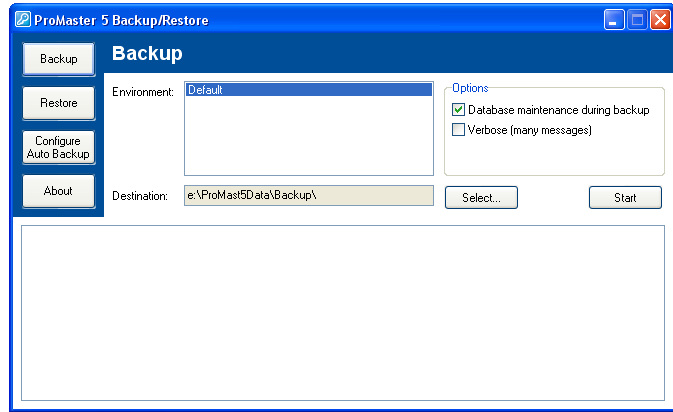


Backing Up Your Data

Easily Backup Your Data

Making a backup of your ProMaster 5 database is as simple as it gets.

Remember, in order to protect against a failure of the hard drive in your computer, you should burn the backup to CD or other permanent media.

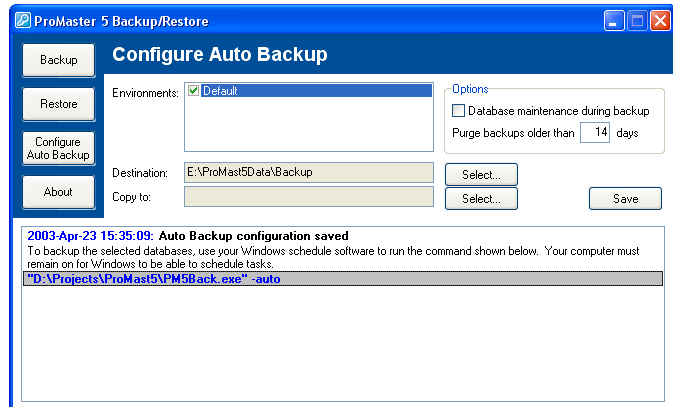


Reoccurring Backups For Reoccurring Protection

For protection of your data without having to remember, configure ProMaster 5 for Auto Backup.

When you save the configuration, the command that you need to put into your Windows Schedule Software is displayed.

We recommend you configure your Windows Schedule Software for at minimum weekly backups.



Remember: In order to protect against a failure of the hard drive in your computer, you should burn your backups to CD or other permanent media.

Security: For security reasons, backup is only allowed for databases that reside on the same computer that the backup program is run on. i.e. To backup the database on the Server in a Network Installation, the backup must be run on the server.

Simpler Integrated Upgrade

The database upgrade, previously a stand-alone program, is now accessed from the ProMaster 5 **Tools** menu. The tasks of upgrading the database and loading the program into the database are now performed at the same time.

When you upgrade your ProMaster 4 database to ProMaster 5 you'll see the new integrated database upgrade in action.

Changes To Finding Data

Finding Clients

You can now search for a client by any part of the client's name. e.g. To find "Joe Bloggs Family Trust" you can simply search for "Bloggs".

Finding Systems By System Number

A Find All systems button is added to the **Open System** window.

There is a new option to search anywhere within the System Number. E.g. Searching for "C001" is now able to locate a system numbered "XA_C001".

The screenshot shows the 'Open System' dialog box. It has a 'Look for' section with several input fields: System Number, Old, Contact, Site Description, Address, Job Number, City, Client Name, and Country. Below these are two dropdown menus for System Type and Profile, and a Key Code field. At the bottom, there are two checkboxes: 'Show only systems with a pending job that require coding' and 'Look anywhere in system number'. The 'Look anywhere in system number' checkbox is circled in red. To the right of these checkboxes is a 'Find All' button, also circled in red, and an 'Find' button.

Finding Systems By Address

Now you can enter one or more parts of a system's address, in any order and the search will look for all parts of the address in all of the address fields. Not knowing the whole address is no longer a problem.

Finding Keys

From the Find Keys window you have direct access to history. The key color is displayed too, for design modules with colored keys.

Data Entry Changes

Editing Client

The client for the system you have open may now be edited directly from a new entry on the **System** menu – you no longer need to locate the client through Find Client.

Key And Door Sorting

When you are sorting keys or doors, you can now right click on the list to get a menu. The menu also shows you the keyboard shortcuts for increased efficiency. Doors can be sorted by stamping now.

Adding Keys And Doors Without Sorting

When you add a new key or a new door, an attempt is made to insert the new key or door after the currently selected item (rather than at the bottom). Under some circumstances this may not be possible in which case you should sort the keys or doors.

Cursor Position In Doors And Keys

An option has been added to determine if the Add button or if the list is highlighted when opening the list of doors or keys. To control this option, select the **File** menu then **Preferences**.

Removing Uppercase Entries

You know how sometimes it's too much effort to type in mixed case, or perhaps you left the caps lock on by mistake.

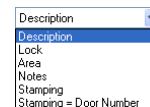
It doesn't look good, it's hard to read, and it takes too much space on printouts.

Now ProMaster 5 will automatically convert entries that are in upper case to title case. If the entry you type has any lower case letters then ProMaster will leave it alone.

New application parameters have been added to turn this behavior off if you really want to keep entries in upper case.

Bulk Change Doors

Two new options have been added to bulk change for doors. The first is to change the stamping and the other is to change the stamping to be the same as the door number.



Bulk Change Keys And Doors

When you make bulk changes to keys or doors, you now have the choice to restrict the list of keys or doors to those you see in the key selection or door selection. Now it's much easier to make changes without individually selecting keys or doors.

Deleted (Replaced) Keys Cannot Be Edited

Keys that have been replaced are flagged as deleted. As they are no longer active, ProMaster 5 prohibits you from making changes to these keys.

Keys Can Be Un-Replaced

Have you ever replaced a key with another, assigned a code etc when the customer tells you that one of the original keys was lost?

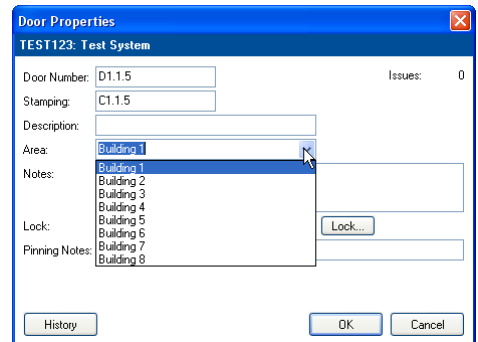
Then a short time later another call to tell you that the key has been found and there's no need to replace the keys?

Now when you remove the replacement key, the original key is reinstated for you.

Door Area Selection and Lock Selection From Drop Down List

When you are adding or editing doors, we've added a drop down list to select a door area that has already been used. Or if you want a new area, simply type it in as you're used to doing.

The lock can also be selected from a drop down list that shows locks already used on this system.



Changes To Jobs

Changing Job Order Number After Manufacturing

There are times when you don't have the job invoice number or customer order before you process a job. Now ProMaster 5 lets you change these after the job is manufactured (with the appropriate security access of course!)

Manufacturing A Job After It Is Closed

A new application parameter has been introduced to control whether or not a job may be manufactured after it is closed. In a factory environment you can stop the manufacturing paperwork being produced twice.

Examining Signatories On Restricted Systems

On systems with restricted signatory authorities, you can examine the authorized signatories for each key as you place the order. If there are insufficient signatories for an order you can quickly see who needs to authorize the order.

Ordering Key Reissues

A job may now specify a reissue of a key. In this case you must choose an issue number for the key that has already been produced.

And of course the same job may contain other keys and doors.

Key No	H/S	Qty Cut	Type	Quantity	Notes
GGMK	<input type="checkbox"/>		1		
GMK1	<input type="checkbox"/>		1		
MK1.1	<input type="checkbox"/>		5		
C1.1.1	<input type="checkbox"/>		3		
C1.1.2	<input type="checkbox"/>		3		
C1.1.3	<input type="checkbox"/>		3 Reissue 2	1	
C1.1.4	<input type="checkbox"/>		3 Key	3	
C1.1.5	<input type="checkbox"/>		3 Reissue 1	1	
C1.1.6	<input type="checkbox"/>		3		
C1.1.7	<input type="checkbox"/>		3		
C1.1.8	<input type="checkbox"/>		3		
C1.1.9	<input type="checkbox"/>		3		

Description: Change Key

Buttons: Release To Manufacturing, Cancel Job, Reissue, Properties, Print Keys, OK, Cancel

Sending Manufacturing Information To PDA Devices

How much time have you spent on the phone or RT to get key codes and pinning information to one of your staff on the road?

With ProMaster 5 you can email key codes and pinning information to the locksmith on the road so it can be read on a PDA (Personal Digital Assistant or Pocket PC).

If you set each PDA up as a factory and enter their email addresses then when you manufacture a job it's all ready to go.



Changes When Importing And Exporting Data

Create Systems From An Excel Spreadsheet

ProMaster 5 introduces functionality to create a system from information that your customer has entered into an Excel spreadsheet. An empty spreadsheet template is installed with ProMaster 5 into a subfolder called "Sample". See the previous section [Create From An Excel Spreadsheet](#) for more information.

Mismatched Profile Hierarchy On Imported Systems

When you exchange systems with other locksmiths and lock manufacturers, there are times when one party has the profile hierarchy wrong. ProMaster has always protected you from these discrepancies by not allowing a system to be imported if the hierarchy being imported does not match your profile hierarchy.

ProMaster 5 expands on this functionality by allowing you to print out the profile hierarchy for a system that won't import so you can track down who has the profiles wrong and rectify the problem more easily.

Partial Lock Database Export

A lock database export may now be created for a subset of locks using a variety of selection criteria. Additionally the lock database can be emailed out by ProMaster so you don't even need to switch across to your email program.

New System Export Formats

ProMaster 5 must of course, because of the new data that it stores, introduce a new format for system exporting. ProMaster 5 also allows systems to be exported to ProMaster 4 provided that the system being exported has not used any of ProMaster 5's new features.

Email Exported System

When you export a ProMaster system, it can be emailed out by ProMaster without the need to switch across to your email program.

Exporting To ProMaster 2 Client

There are still a few users out there still using the old "ProMaster 2 Client" software. For technical reasons, the data export from ProMaster 5 to ProMaster 2 Client required a change in its file structures. If you have clients running ProMaster 2 Client then they will need to get the update to support this new file format. [Contact WH Software by email for instructions.](#)

Importing From Deprecated Programs

Importing from deprecated master-key programs has been improved and integrated into the main ProMaster 5 program. Log in as “admin” to perform imports from these old programs.

New Information Stored

System Creator and Design Creator

In the system details, ProMaster now tracks the name of the person who created a system and the name of the person who created the design for the system.

Next time you open a complicated system and want to know more about it, you know whom to ask.

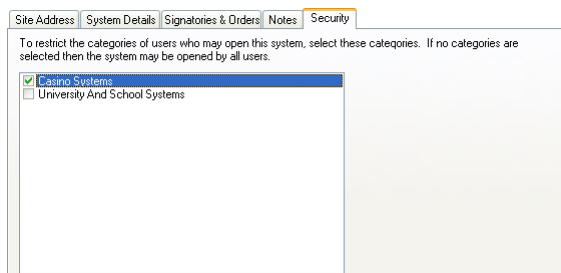
Security Changes

Restricted Access To Systems By Security Category

Sometimes you just don’t want everyone having access to a system.

In ProMaster 5 you can define security categories, and use these to control which users may open each system.

Now don’t be worried that this makes day-to-day use more difficult. If you don’t set any security categories for a system then all your trusted staff can open the system just like they always have.



Password Security Enforced

In a move to ensure a little more protection for your systems, the default password “password” is not allowed for day-to-day use and must be changed the first time you log in.

Now, there have been a few users who have forgotten their administrator password. Like ProMaster Key Manager, ProMaster 5 allows for the resetting of the “admin” password by re-entering your registration details.

Administrative Changes

The System Is Closed, Don’t Use It, Don’t change It

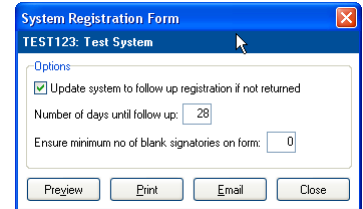
Have you ever opened an obsolete system by mistake? Maybe you meant to open the new system that replaced it.

ProMaster 5 allows you to flag a system as **Closed**, thereby allowing no more activity on it. Of course mistakes do happen so with the right security access you can un-flag the system and carry on using it.

Signatory Follow Up Interval – You Decide

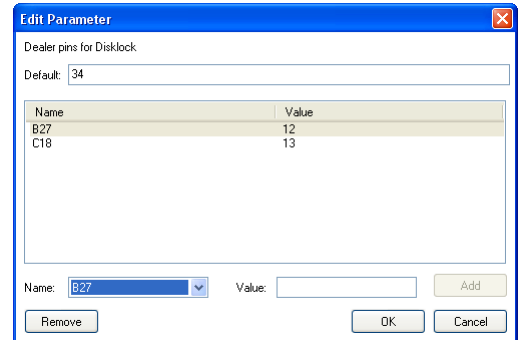
ProMaster 5 lets you set up a default number of days for follow up of Signature Registration forms.

On an individual basis you can override the number of days until follow up is expected.



Dealer Cuts (Disklock, Bilock, Lockwood Twin)

Application parameters have been expanded to allow you to specify default dealer cuts and also dealer cuts for each profile. Great for dealers with multiple exclusive profiles.

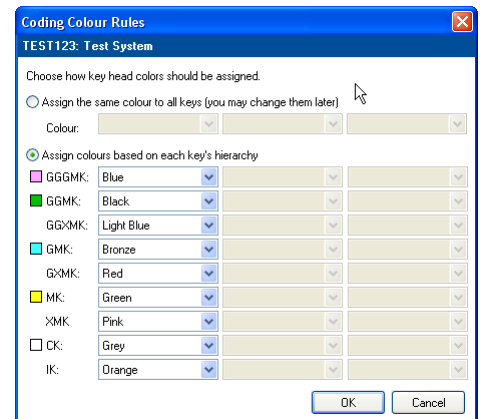


Coding Changes

Automatic Color Assignment

When you ask ProMaster 5 to code a system for you, the key colors can be assigned automatically too.

If you don't want colors assigned automatically based on the hierarchy then you can elect to have them all assigned the same color.



Manual Coding Entry

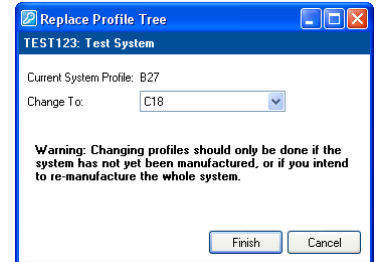
Manual entry of codes for a system is made much easier. After you enter each code, the code entry window reappears ready for you to enter the code for the next un-coded key.

Changing Profile Tree For Coded Systems

A new button on the “Information” tab allows the whole profile tree for a system to be changed.

Great for re-keying a system on a different profile, or if you coded a system (and it’s not yet manufactured) on the wrong profile.

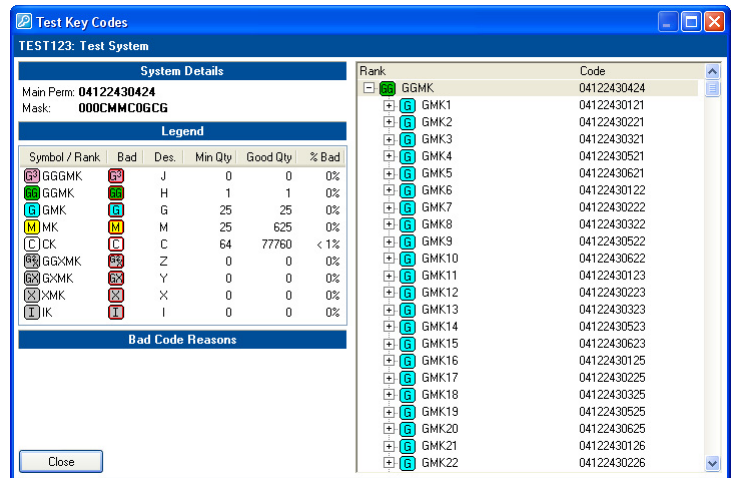
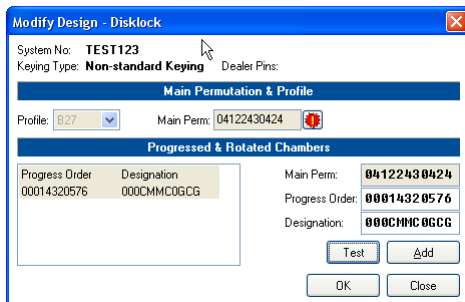
Be careful. On multi-profile systems you must select a new profile for each profile that has been used in the coding. Incorrect choices will make a complete mess of your system!



Testing Your System

Whereas in ProMaster 4 you could only test the output from the Design Assistant, you can now test the parameters (Depth steps, designations etc) that you enter manually.

If you don’t like the result you can change it right away and try and have another look.



The test Tree now shows you the number of codes and proportion of bad codes for your design.

Descriptions For Medeco Biaxial Masks

Due to the nature of Medeco Biaxial systems, coding can be a little difficult on the mind! ProMaster 5 allows you to add a description for each mask (in Biaxial typically a group of codes with different angles).

To change the description, right click on the list of masks when you are changing the system design.

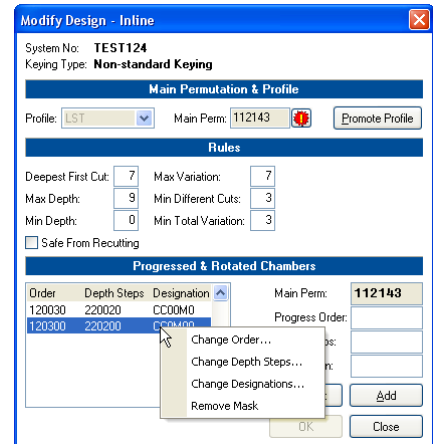
The description appears on the tabs above the coding tree and coding matrix.

Changing Depth Steps etc.

While modifying a system design, right clicking on the masks allows changes to depth steps, designations and progress order.

You can also remove a mask.

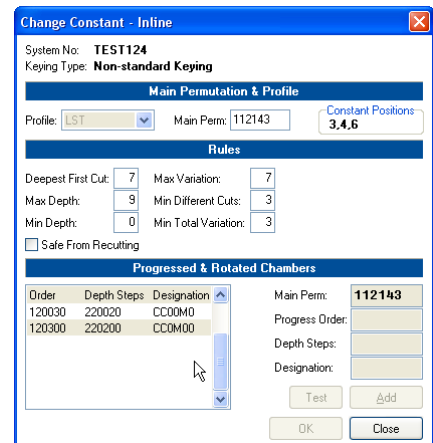
Both of these tasks require the appropriate security access of course.



Changing A Constant For Coded Systems

For designs in Inline, Binary Plus and Lockwood Twin, a new button is provided in the "Information" tab to allow you to change a constant position and have all codes changed.

Only positions that are constant across all assigned key codes may be changed.



Landing On The First Un-coded Key

There is a new Application Parameter that controls which key is highlighted when a coding window is opened. Choices are (a) the first key and (b) the first un-coded key. Remember, there are still the same hot keys to jump between un-coded keys without the need to scroll the list and look for them.

Coding Matrix Availability

For those who always code in the Coding Tree, and want the more powerful, but more complicated Coding Matrix made unavailable, there is a new Application Parameter to disallow use of the Coding Matrix.

Reporting Changes

Key History Report

A new report has been added for printing Key History.

Door History Report

A new report has been added for printing Door History.

Job Summary Report

A new report has been added to job manufacturing to show a summary of the job.

Aged System Report

This report now includes the client contact name and phone number.

Lock Usage Report

This report now includes cylinders that are part of a lock assembly.

Abloy Pinning

Abloy pinning reports may now display the lifting disk as "P" rather than "0". There is an application parameter to control this functionality.

Keying Matrix

The option to show the Door Area on the Keying Matrix report has been added.

Signatory Authority Matrix Report

A new report in matrix layout to show whom may authorize an order for each key.

Systems Without Signatories Report

A new report to show systems that do not have signatories or have insufficient signatories.

Client Job Confirmation

The Client Job Confirmation reports now include space for the client to sign.

Selection Criteria For Door Reports

All door related reports may now use “Doors that fit a selection of keys” as the criteria. Previously only a single key could be specified.

Easier Access To Reports

From the Key Access and Door Keying windows you can go directly to the applicable reports.

Systems List

A report listing systems may be printed from the Open System window.

Jobs List

A report listing jobs may be printed from the Open Job window.

Key Codes Report Selection Criteria

The Key Codes report may now be printed for a range of keys. Previously all keys were printed.

Door Hardware Summary

The Door Hardware Summary report may now use a single job as the range or criteria.

Matrix Style Reports To PDF

Matrix style reports (Keying Matrix and Key Signatory Authority Matrix) have been enhanced to print to PDF format so they may be emailed.